

Plastic tanks

We are pleased to inform you that the range of tanks is enriched with the introduction of **PLASTIC TANKS**.

The range includes tanks in three different capacities **46, 30** and **12** liters all made of **cross-linked polyethylene (XL-PE)** in black with rotoforming technology.

V1PR1N04640 - 46 lt

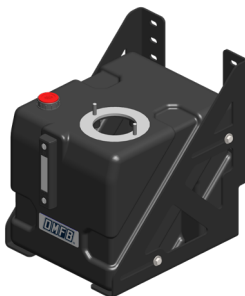


- Suction G 1 1/4
- Emptying hole and G 1 cap on the bottom
- G1 filling/venting cap with filter and oil breather system
- Column level, centre distance 127
- Plate for mounting commercial filters on the return center distance 115
- Internal bulkhead that divides the return oil from the intake oil that prevents the formation of air in the circuit
- Mounting kit **135903P1RX1** (OPTIONAL)



Link:
[Data sheet](#)
[Assembly instructions kit](#)

V1PL2N03040 - 30 lt



- Suction G 1
- Emptying hole and G 1 cap on the bottom
- G3/4 filling/venting cap with filter and oil breather system
- Column level, centre distance 127
- Plate for mounting commercial filters on the return center distance 115
- Internal bulkhead that divides the return oil from the intake oil that prevents the formation of air in the circuit
- Mounting kit **135903P2LN0** (OPTIONAL)



Link:
[Data sheet](#)
[Assembly instructions kit](#)

V1PL3N01241 - 12 lt



- Suction G 3/4
- G3/4 filling/venting cap with filter and oil breather system
- Column level, centre distance 76
- Plate for mounting commercial filters on the return center distance 90
- Internal bulkhead that divides the return oil from the intake oil that prevents the formation of air in the circuit



Link:
[Data sheet](#)



#TankExpert